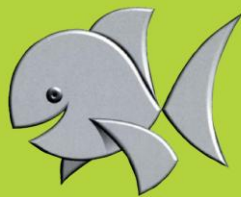


[www.delcros.fr](http://www.delcros.fr)

TRAITEMENTS DE SURFACES  
**inox & alu**



**DEL·CROS**



**DECAPAGE**

**PASSIVATION**

**POLISSAGE ELECTROLYTIQUE**

**ANODISATION**

**TRIBOFINITION**

**MICROBILLAGE**

**EBAVURAGE**

*La technologie au sens propre*

# INOX



Brut

Décapage-passivation

Electropolissage



Divers traitements





Décapage-passivation





Décapage-passivation







Microbillage





Microbillage



Microbillage extérieur  
+  
Electropolissage intérieur



Electropolissage







Electropolissage

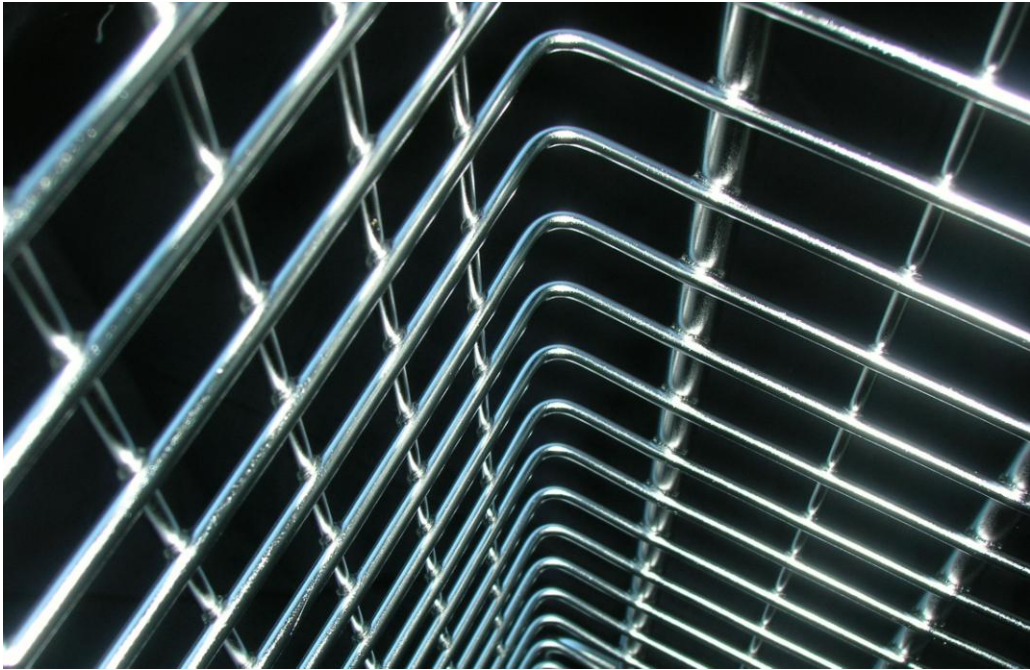




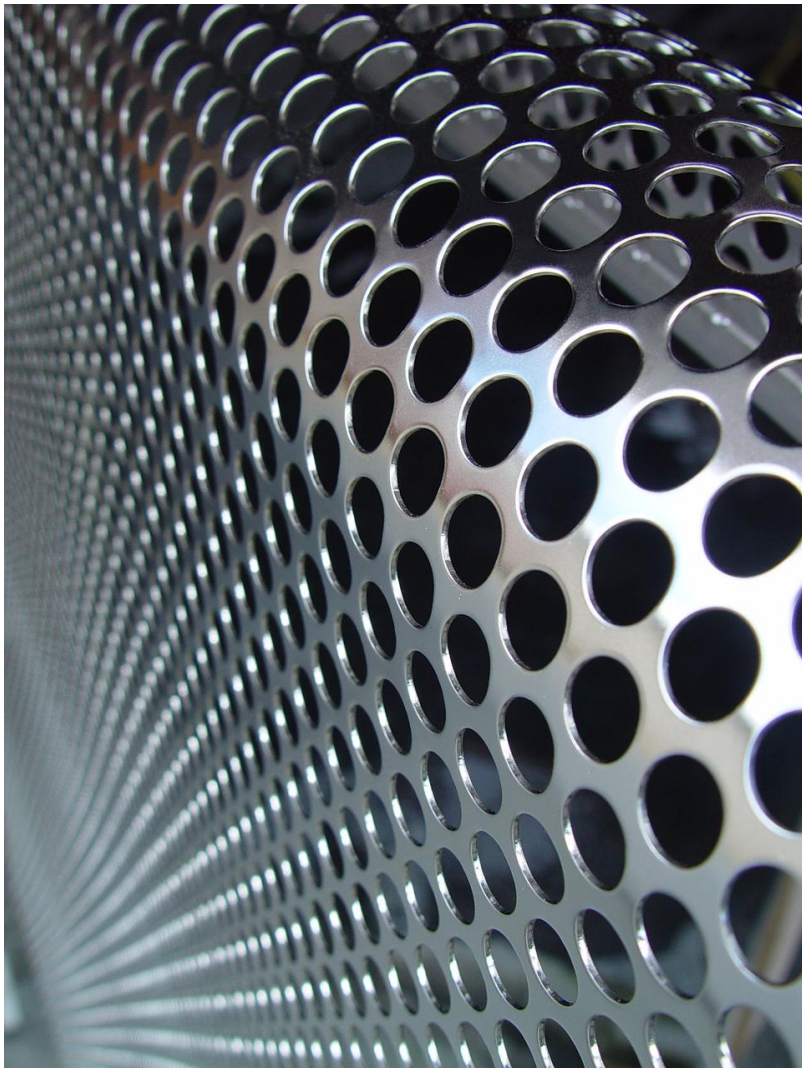


Electropolissage





Electropolissage





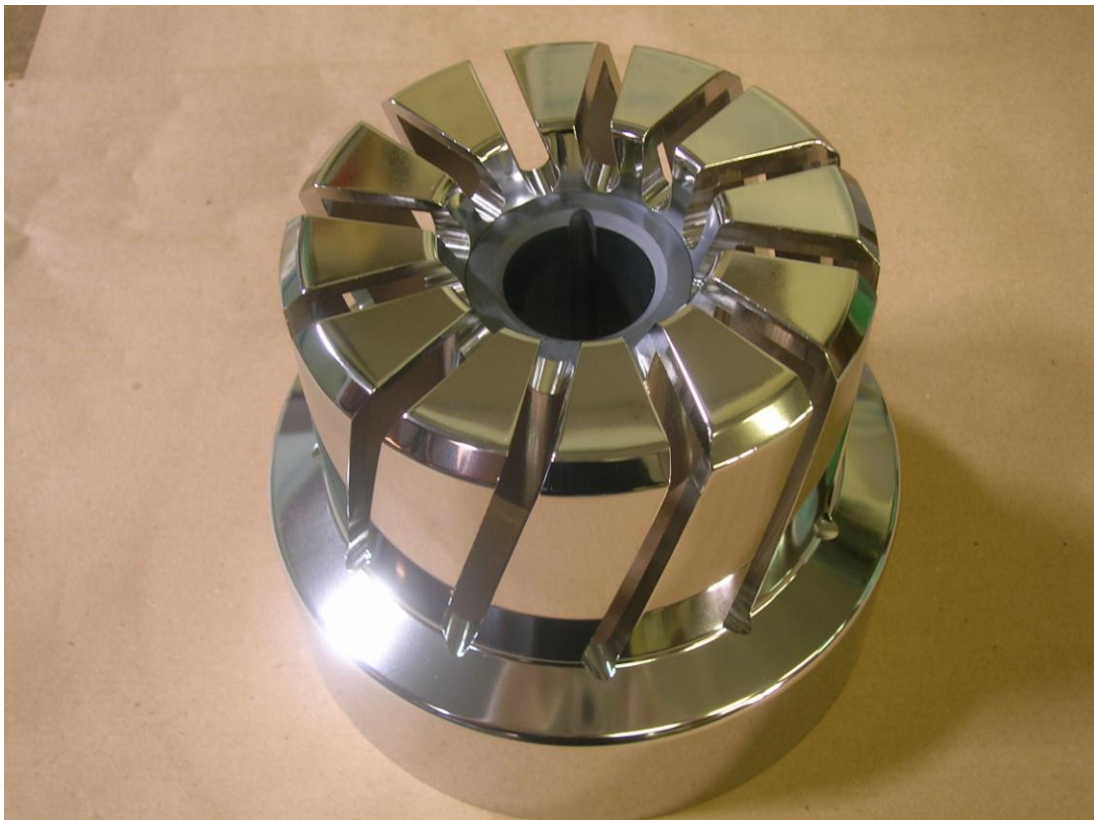


Electropolissage





Electropolissage







Microbillage + électropolissage





Microbillage + électropolissage

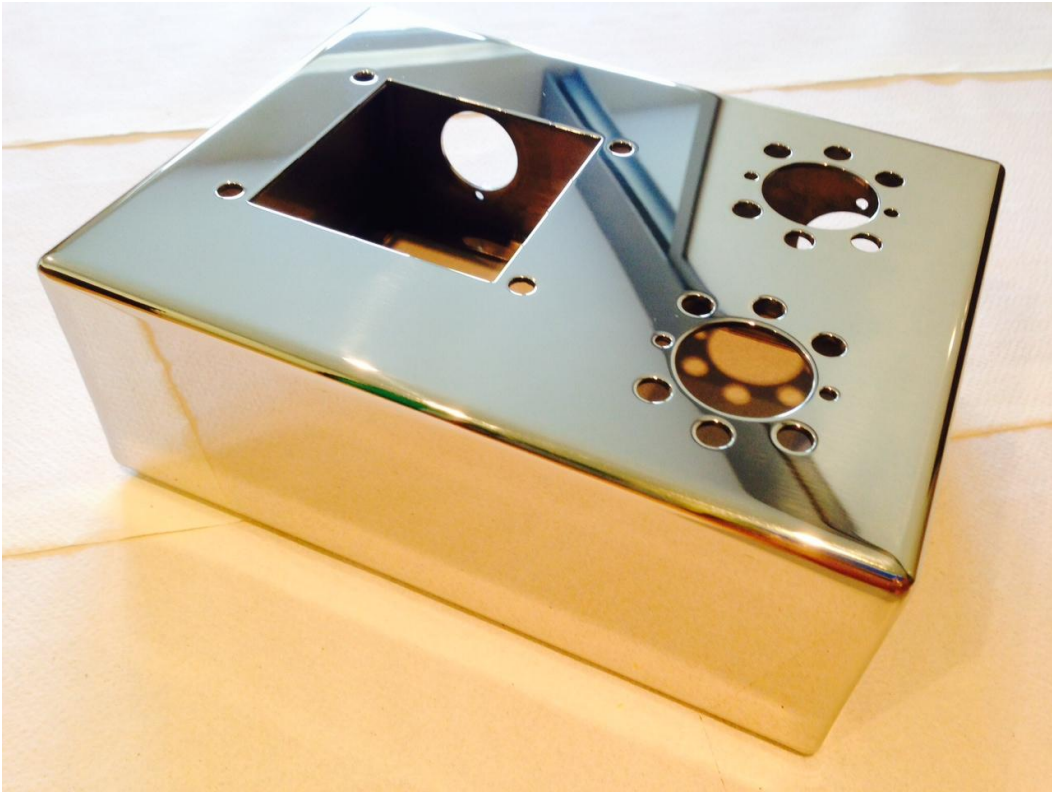




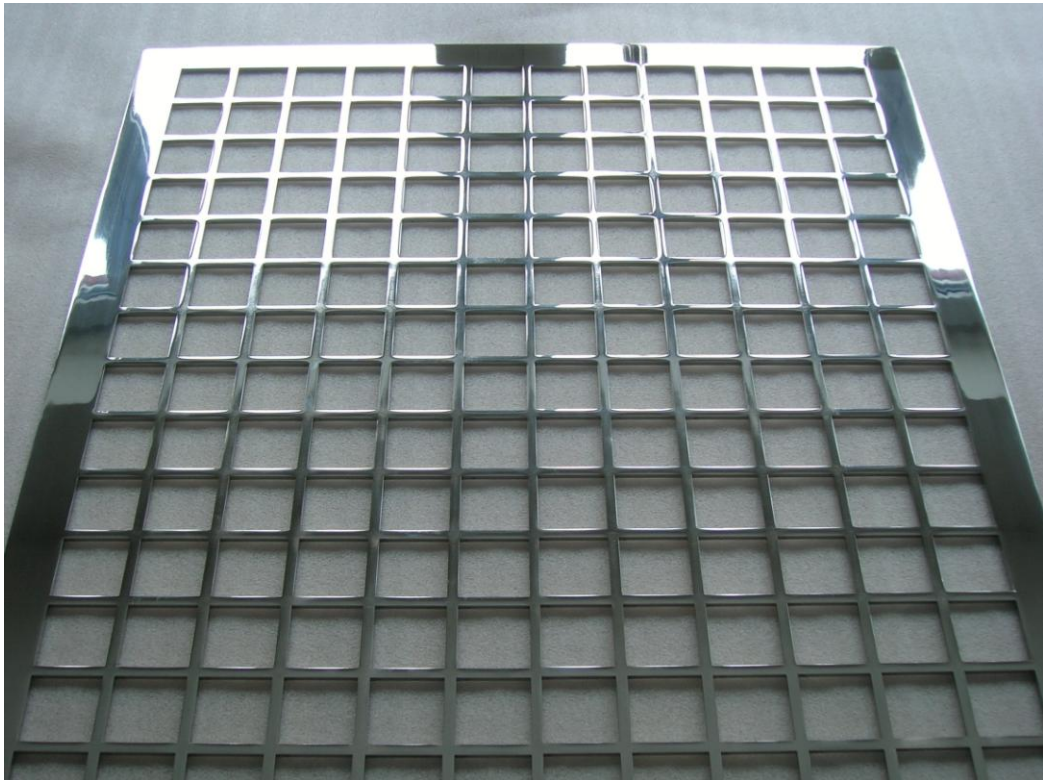


Tribofinition (ébavurage / glaçage)

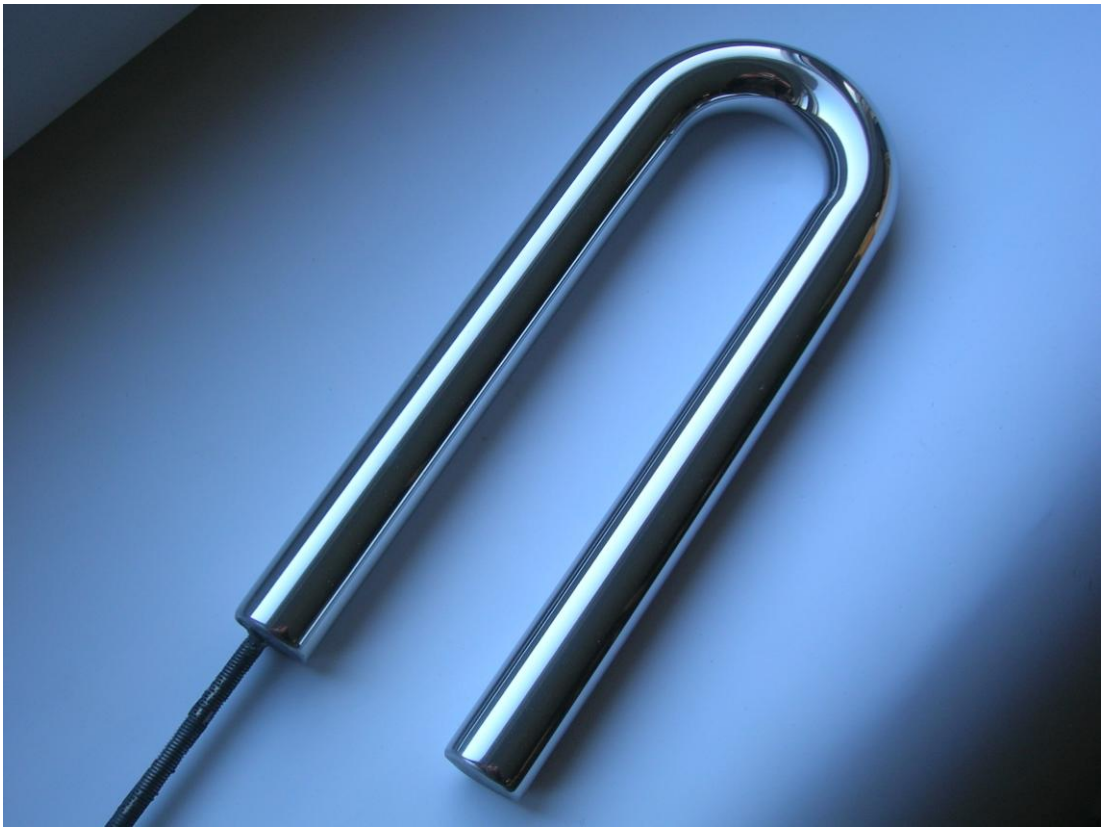




Polissage mécanique miroir





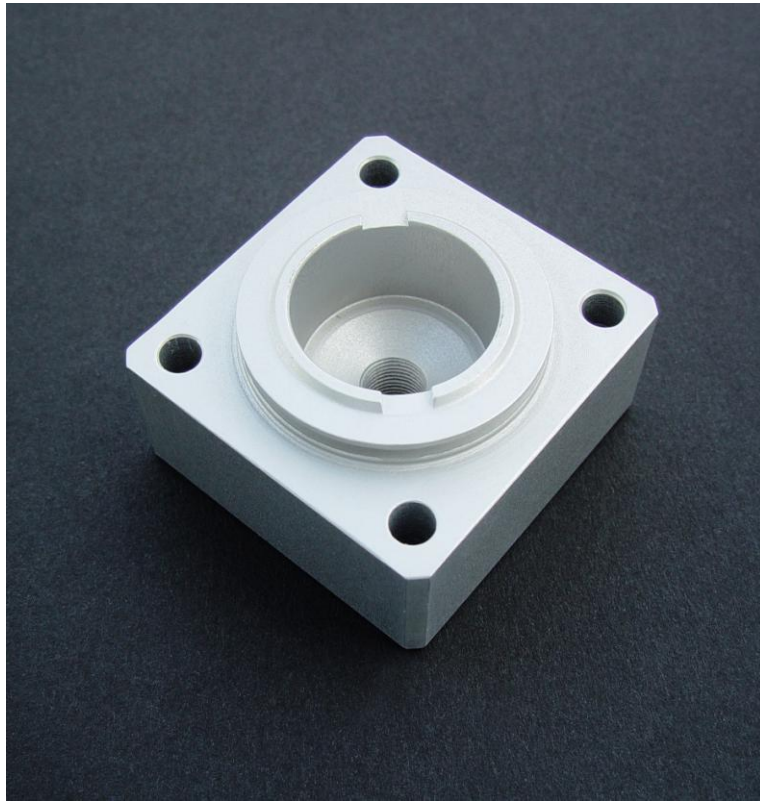


Polissage mécanique miroir



Polissage mécanique brossage

# ALUMINIUM



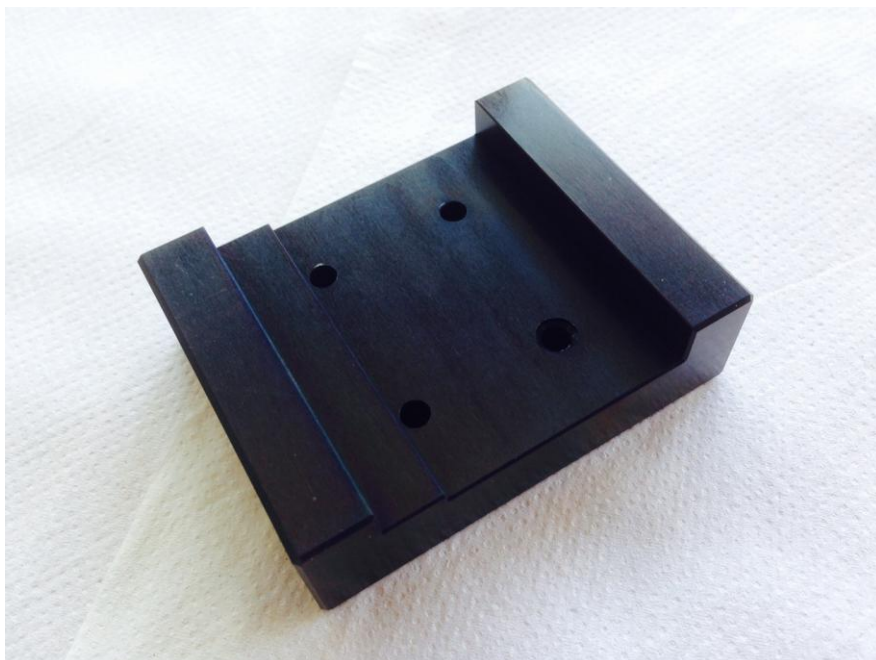
Anodisation incolore







Anodisation noire



# ACIER CORTEN



Enrouillage d'acier Corten

